



Galectin-8 Polyclonal Antibody

Catalog No	YP-Ab-00407
Isotype	IgG
Reactivity	Human;Mouse
Applications	WB;IHC;IF;ELISA
Gene Name	LGALS8
Protein Name	Galectin-8
Immunogen	The antiserum was produced against synthesized peptide derived from human LEG8. AA range:61-110
Specificity	Galectin-8 Polyclonal Antibody detects endogenous levels of Galectin-8 protein.
Formulation	Liquid in PBS containing 50% glycerol, 0.5% BSA and 0.02% sodium azide.
Source	Polyclonal, Rabbit,IgG
Purification	The antibody was affinity-purified from rabbit antiserum by affinity-chromatography using epitope-specific immunogen.
Dilution	Western Blot: 1/500 - 1/2000. IHC-p: 1:100-300 ELISA: 1/20000. IF 1:100-300 Not yet tested in other applications.
Concentration	1 mg/ml
Purity	≥90%
Storage Stability	-20°C/1 year
Synonyms	LGALS8; Galectin-8; Gal-8; Po66 carbohydrate-binding protein; Po66-CBP; Prostate carcinoma tumor antigen 1; PCTA-1
Observed Band	36kD
Cell Pathway	Cytoplasmic vesicle . Cytoplasm, cytosol .
Tissue Specificity	Ubiquitous. Selective expression by prostate carcinomas versus normal prostate and benign prostatic hypertrophy.
Function	domain:Contains two homologous but distinct carbohydrate-binding domains.,online information:Galectin-8 C-terminal CRD,online information:Galectin-8 long isoform,similarity:Contains 2 galectin domains.,tissue specificity:Ubiquitous. Selective expression by prostate carcinomas versus normal prostate and benign prostatic hypertrophy.,
Background	This gene encodes a member of the galectin family. Galectins are beta-galactoside-binding animal lectins with conserved carbohydrate recognition domains. The galectins have been implicated in many essential functions including development, differentiation, cell-cell adhesion, cell-matrix interaction, growth regulation, apoptosis, and RNA splicing. This gene is widely expressed in tumoral tissues and seems to be involved in integrin-like cell interactions. Alternatively spliced transcript variants encoding different isoforms have been identified. [provided by RefSeq, Jul 2008],



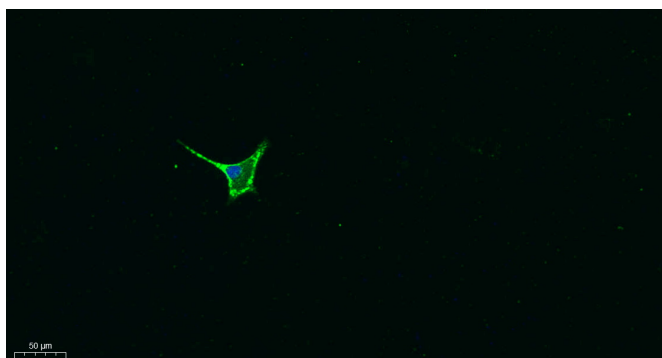
matters needing attention

Avoid repeated freezing and thawing!

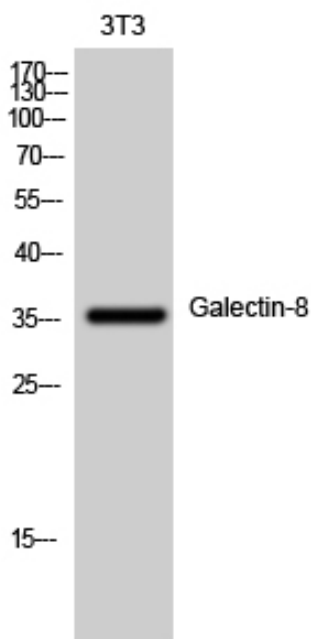
Usage suggestions

This product can be used in immunological reaction related experiments. For more information, please consult technical personnel.

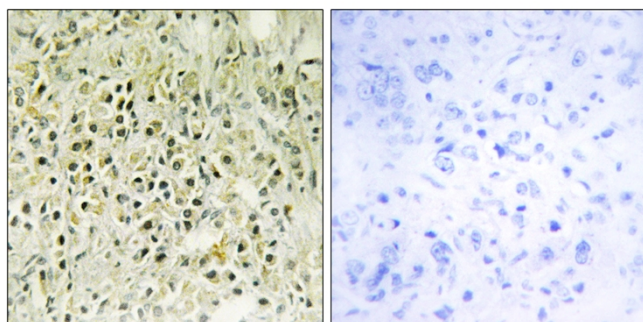
Products Images



Immunofluorescence analysis of A549. 1,primary Antibody was diluted at 1:200(4°C overnight). 2, Goat Anti Rabbit IgG (H&L) - Alexa Fluor 488 Secondary antibody was diluted at 1:1000(room temperature, 50min).3, Picture B: DAPI(blue) 10min.



Western Blot analysis of 3T3 cells using Galectin-8 Polyclonal Antibody diluted at 1:1000



Immunohistochemistry analysis of paraffin-embedded human prostate carcinoma tissue, using LEG8 Antibody. The picture on the right is blocked with the synthesized peptide.



Western blot analysis of lysates from NIH/3T3 cells, using LEG8 Antibody. The lane on the right is blocked with the synthesized peptide.

